



Waltham Avenue, Hayes, UB3 1TA

CHARRISON DAVIS OFFER FOR SALE THIS 3 BEDROOM SEMI DETACHED HOUSE WITH SO MUCH POTENTIAL TO EXTEND AND IMPROVE (stpp) WITH GARAGE/OWN DRIVE SIDE SPACE PROVIDING 'BAGS OF POTENTIAL' TO CREATE A LARGE FAMILY HOUSE WITH MULTIPLE OFF STREET PARKING. This property has gas central heating and double glazed windows with the accommodation currently providing an entrance hall, lounge/dining room, fitted kitchen, 3 good sized bedrooms, loft space suitable for conversion stpp and a re-fitted modern bathroom/toilet. Outside has generous frontage and a detached garage with own driveway to the side providing space to extend. The rear garden has much potential and there is a large detached outbuilding requiring repair.

Waltham Avenue is located walking distance to Hayes town shopping centre and Hayes & Harlington station (Elizabeth Line). Frequent bus routes are on-hand for Heathrow terminals, Uxbridge, Ealing, Hounslow and Harrow. You also have a large ASDA superstore and Botwell sports/leisure centre. Local schools with good Ofsted ratings all within a short distance from the property including Harlington School & Pinkwell Primary School.

AVAILABLE WITH IMMEDIATE VACANT POSSESSION AND NO ONWARD CHAIN!

Guide Price £549,950

Tel: 020 8573 9922 Fax: 020 8569 3495

254 Kingshill Avenue, Hayes, Middlesex, UB4 8BZ

Email: info@charrisondavis.com www.charrisondavis.co.uk

2 Waltham Avenue, Hayes, UB3 1TA



2 Waltham Avenue, Hayes, UB3 1TA



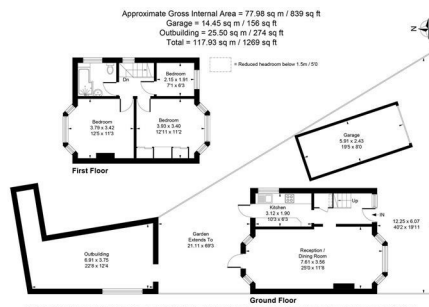
2 Waltham Avenue, Hayes, UB3 1TA



2 Waltham Avenue, Hayes, UB3 1TA



2 Waltham Avenue, Hayes, UB3 1TA



Energy Efficiency Rating

	Current	Potential
<p><i>Very energy efficient - lower running costs</i></p> <p>(92 plus) A</p> <p>(81-91) B</p> <p>(69-80) C</p> <p>(55-68) D</p> <p>(39-54) E</p> <p>(21-38) F</p> <p>(1-20) G</p> <p><i>Not energy efficient - higher running costs</i></p>	<p>62</p>	<p>79</p>

England & Wales

EU Directive
2002/91/EC



2 Waltham Avenue, Hayes, UB3 1TA

